

The Parkwise Promise

School Guidance

When parents and carers park too near to school entrances or close to crossing points it creates safety issues for those walking and cycling into school. The Parkwise Promise is intended to target dangerous and inconsiderate parking outside your school.

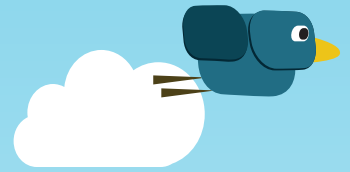
Parents and carers will be asked to sign a 'promise' agreeing to park responsibly when they drive their children to school. They will be made aware of the issues associated with inconsiderate parking and given information to consider when deciding where to park. Those who sign up will receive a car sticker to be displayed in a car window. This will show that they are parking responsibly and hopefully encourage other parents and carers to do the same.

The school may want to include suggestions of where to park or not park, this could be shown on a map for instance. However, it is important to bear in mind that parked cars offer natural traffic calming, therefore, you may want to think carefully before excluding the entire area in front of the school from parking.



Places where you may want to discourage parents from parking could be:

- on the school zig zag lines
- within 10m of a junction
- on pavements or verges
- in bus stops
- across vehicle access points including residents' driveways
- near to any crossing points including school crossing patrols



What does the school have to do?

- Nominate someone within the school to be a point of contact for the scheme.
- Promote the Parkwise Promise and send out letters to all parents.
- Issue car window stickers to parents who return signed promises.
- Monitor parking near the school to assess the success of the scheme and to ensure parents are compliant.

What does the School Travel Planning Team provide?

We will supply the letters for parents and the car stickers. We can also provide a map of the school and local vicinity which you can then mark to show where the school suggests parents might park.

The Road Safety Team at Hampshire County Council can provide banners displaying a message from the school's children asking drivers to park with care and away from the school entrance.

For more details contact The Road Safety Team by e-mail road.safety@hants.gov.uk or on 01962 846100.

Want more information?

To find out more or to order materials please contact the School Travel Planning Team at schooltravelplans@hants.gov.uk or on 01962 845638.

