

# Fractions





Is it a half?

Answer on the next page.





Is it a half?

answer

Yes, it is a half because it is divided into two equal parts.



Is it a half?

Answer on the next page.





Is it a half?

answer

No, because it's a whole shape.



Is it a half?

Answer on the next page.





Is it a half?

answer

No, because the parts are not equal.

# Is it a half?

Half of the class are girls.  
There are 6 girls.  
How many children are in the class altogether?



Answer on the next page.



# Is it a half?

Half of the class are girls.  
There are 6 girls.  
How many children are in the class altogether?



answer

12

# Halve It!

What is half of this amount?



Answer on the next page.



# Halve It!

What is half of this amount?



4p

answer

# Halve It!

What is half of this amount?



Answer on the next page.



# Halve It!

What is half of this amount?



5p

answer

## Halve It!

What number is  
half of 10?

Answer on the next page.







## Halve It!

What number is  
half of 10?

5p

answer

## Halve It!

What number is  
half of 12?

Answer on the next page.







## Halve It!

What number is  
half of 12?

6p

answer

## Halve It!

What number is  
half of 20?



Answer on the next page.





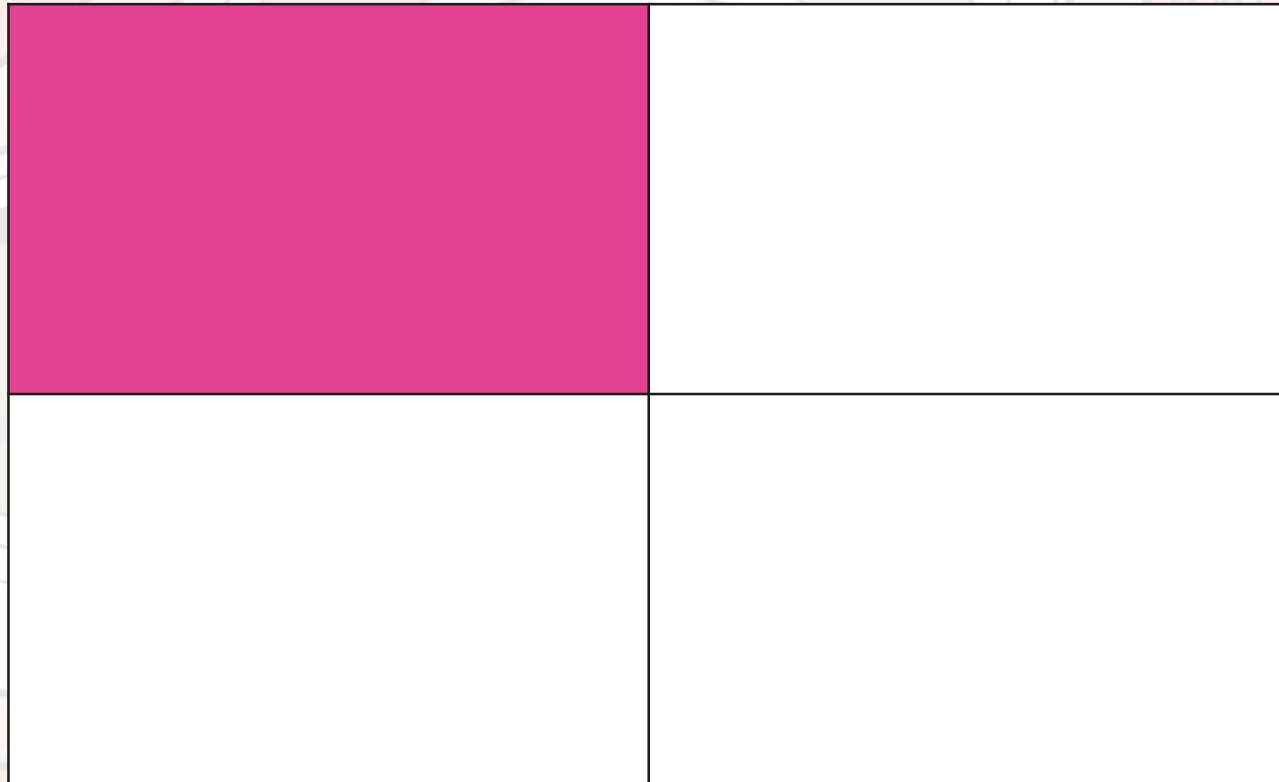
## Halve It!

What number is  
half of 20?

10p

answer

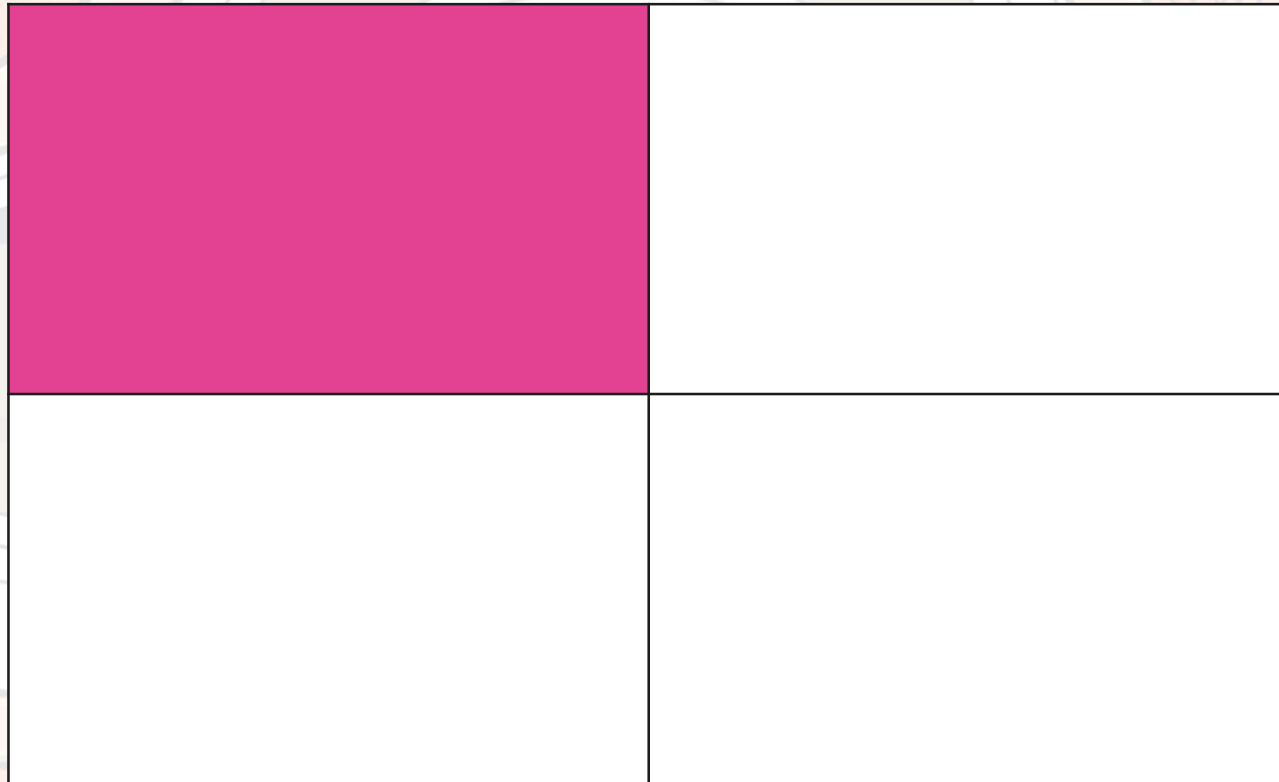
Is it a quarter?



Answer on the next page.



Is it a quarter?

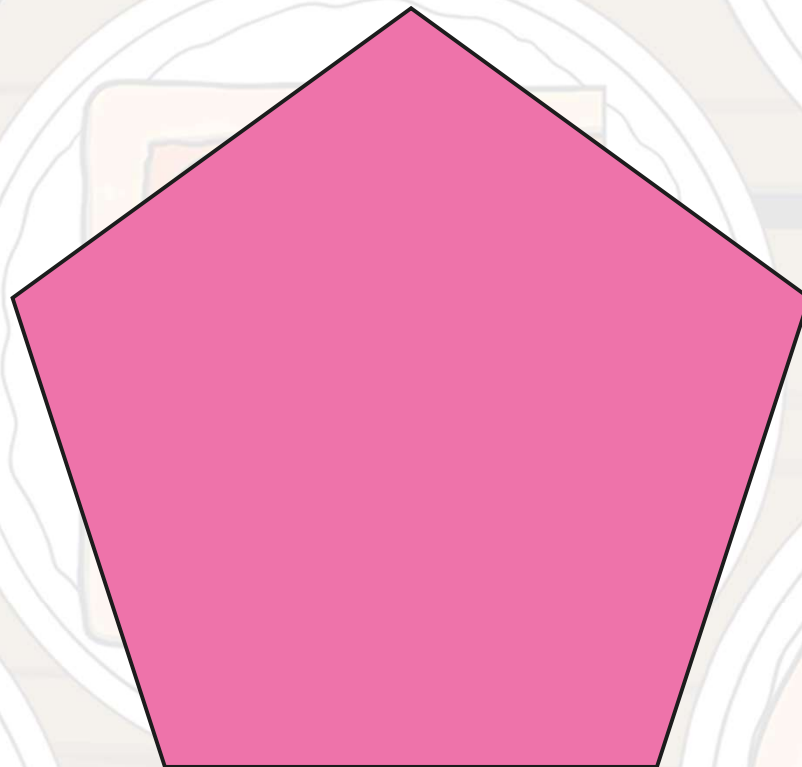


answer

Yes, because it is divided into four equal parts.



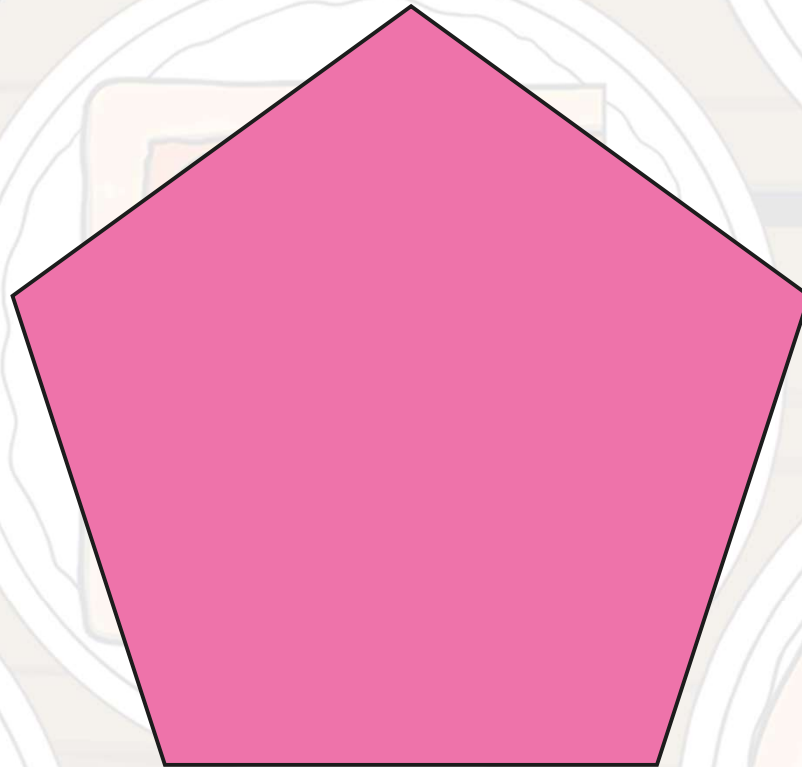
Is it a quarter?



Answer on the next page.



Is it a quarter?

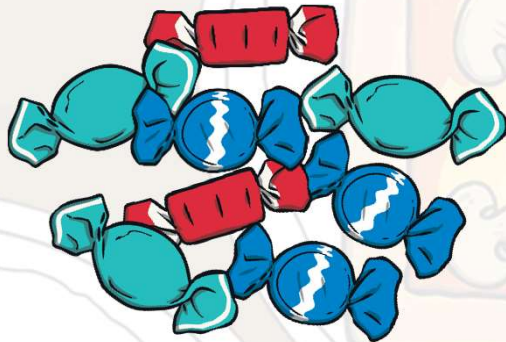


answer

No, because it is not divided into four equal parts.

# Is it a quarter?

Ruby shared 8 sweets into 4 party bags.  
How many sweets were in each party bag?



Answer on the next page.



## Is it a quarter?

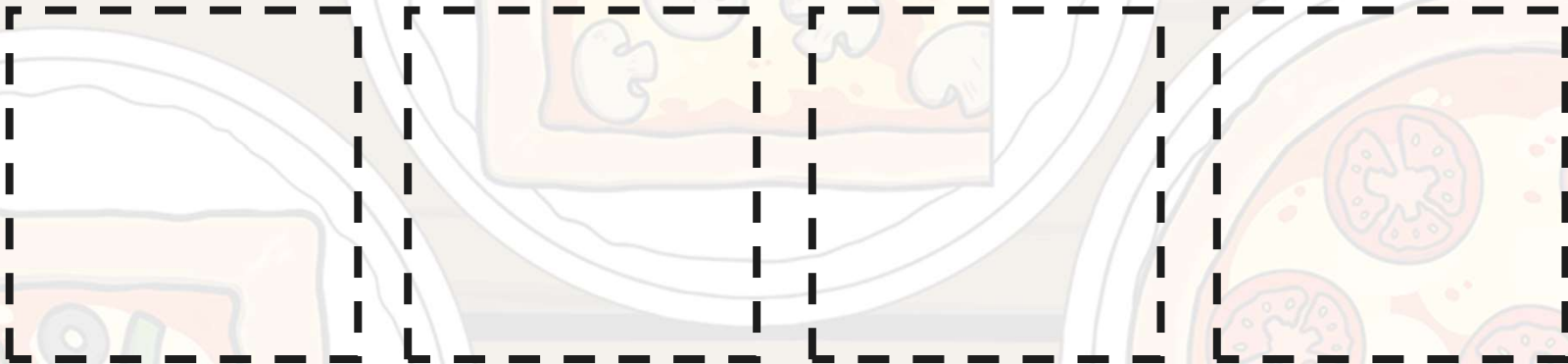
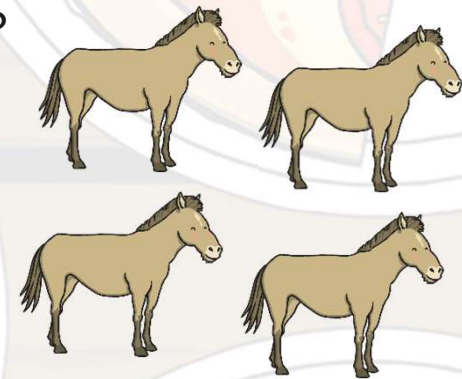
Ruby shared 8 sweets into 4 party bags.  
How many sweets were in each party bag?



answer

# Is it a quarter?

Share the animals equally into the pens.  
How many animals are in each pen?

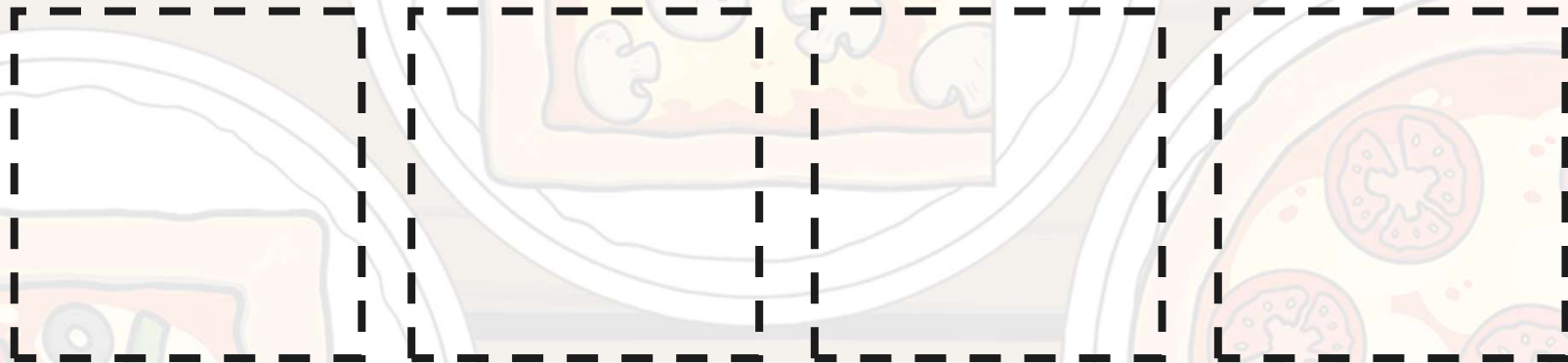
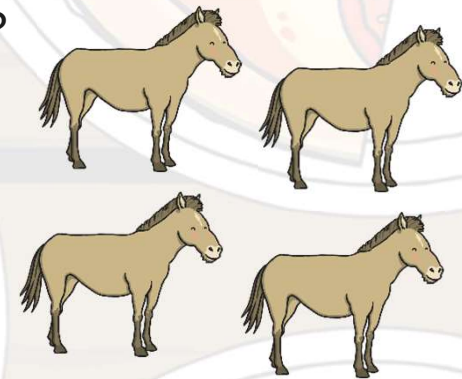


Answer on the next page.



# Is it a quarter?

Share the animals equally into the pens.  
How many animals are in each pen?



answer

3 sheep and 1 horse

