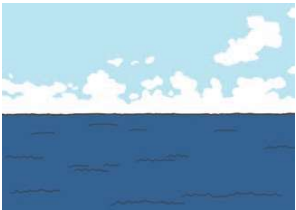


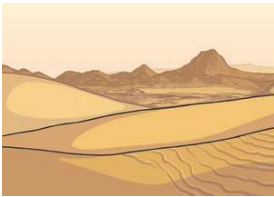


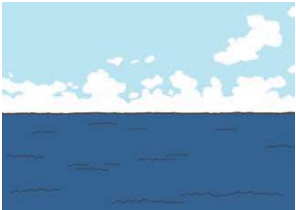







Habitat Matching Game

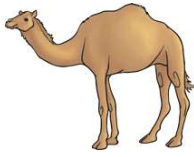
Note for parents: This game for two players encourages children to think and talk about animal adaptation. Once you have played the game a few times, your child can make new cards, thinking about choosing animals (through research) which are clearly adapted to their habitat.

Instructions: Cut out the cards. Each player takes one of each of the habitat cards and places them face up. Place the animal cards in a pile face down. Take it in turns to choose an animal card. Place it by its habitat card and explain one way in which it is adapted to its habitat. The winner is the person with the most cards at the end.

Habitat Card

 <p>ocean</p>	 <p>Arctic</p>	 <p>rainforest</p>
 <p>desert</p>	 <p>field and hedgerow</p>	 <p>pond</p>
 <p>ocean</p>	 <p>Arctic</p>	 <p>rainforest</p>
 <p>desert</p>	 <p>field and hedgerow</p>	 <p>pond</p>

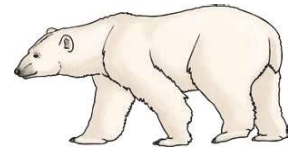
Animal Cards



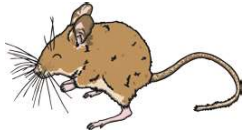
camel



toad



polar bear



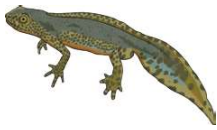
field mouse



rattlesnake



hedgehog



newt



butterfly



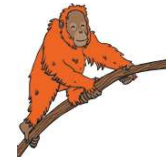
coral



lemur



armadillo



orangutan



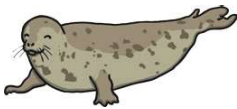
fruit bat



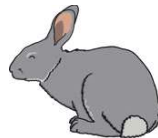
Arctic fox



tiger



seal



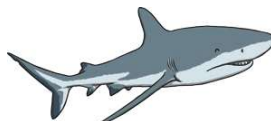
rabbit



pond skater



Siberian husky



shark



tree frog



mole



jellyfish



sloth