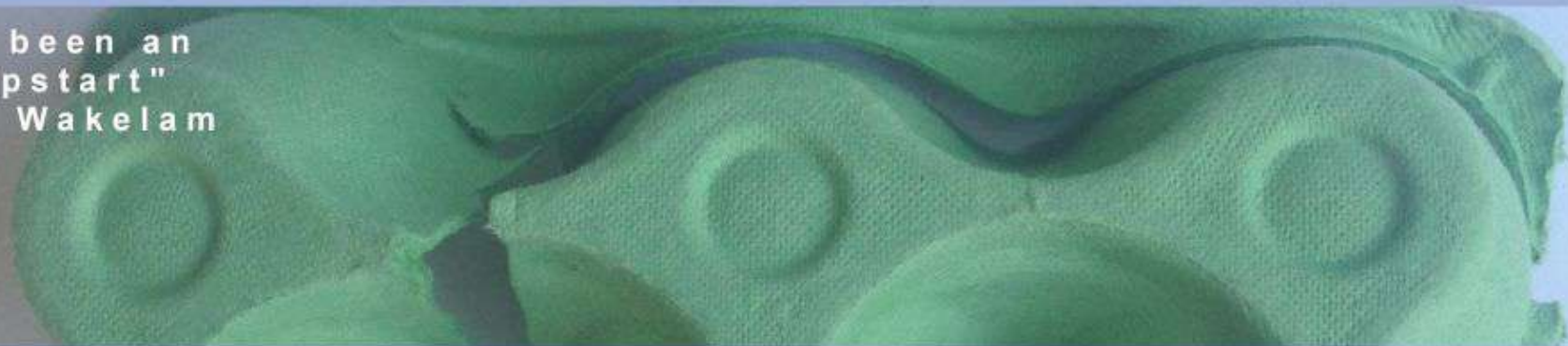


# Egg Box Dog & Bone



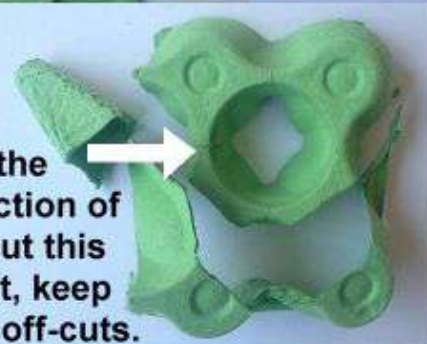
This has been an  
"art jumpstart"  
by Darrell Wakelam



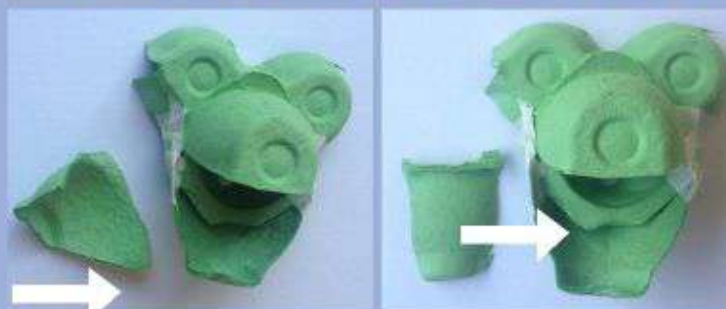
1 - Cut off two sections of the egg box and save these for later on.



2 - From the larger section of the box cut this shape out, keep all of the off-cuts.



4 - Use another piece to make the lower jaw and another curved piece to make a tongue.



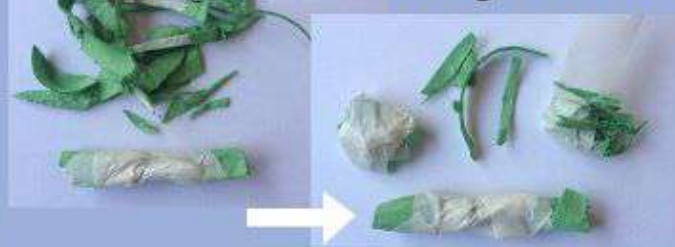
5 - OK, From these larger bits I've got left over I'm going to use these ... for the ears ... and this ... for the nose.



3 - Use part of the piece you cut away in stage '1' to make a snout, like this.



6 - I always try to use all the bits I've got left so ...



... I've taped them up to make a bone.



7 - Now you can paint it.

# Egg Box Dog & Bone

This has been an "art jumpstart" by Darrell Wakelam

