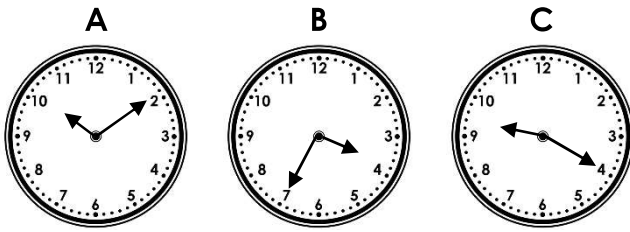


## Telling Time to 5 Minutes

## Telling Time to 5 Minutes

4a. Draw lines to match the correct times.



25 to 4

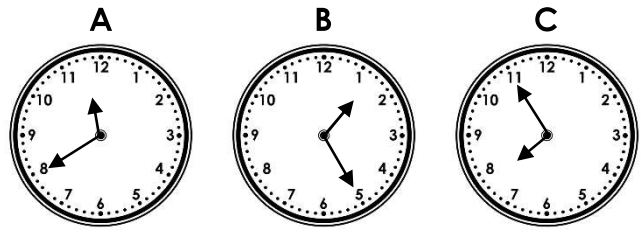
20 past 9

10 past 10



PS

4b. Draw lines to match the correct times.



5 to 8

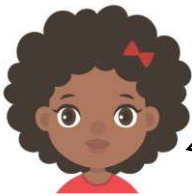
20 to 12

25 past 1



PS

5a. Meadow says,



I left home at 10 past 8 and arrived at school at 20 to 9, so the minute hand was on the 4.

Is she correct?

Explain why.



R

5b. Matthew says,



I got on the bus at 10 past 8. When I got off the bus it was 25 to 9, so the minute hand was on the 5.

Is he correct?

Explain why.

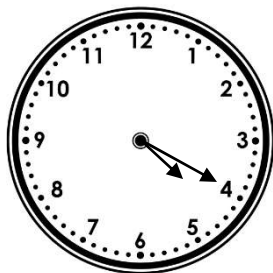


R

6a. Pete starts his run at 20 past 4.

He runs for 5 minutes in one direction and then runs 5 minutes back.

What time does he finish his run?

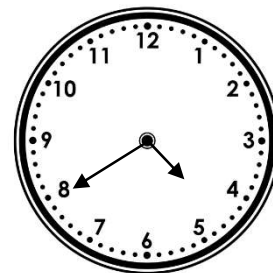


PS

6b. Tianni goes swimming at 20 to 5.

She swims one length in 5 minutes and swims another length in 5 minutes.

What time does she finish swimming?



PS