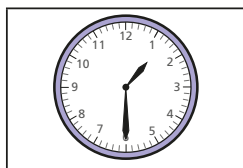


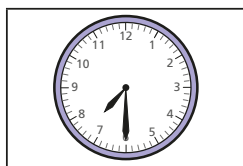
Time to the half hour



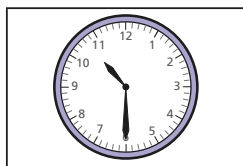
1 Match the clocks to the times.



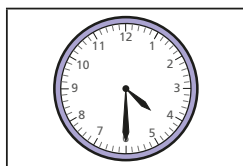
half past 7



half past 10

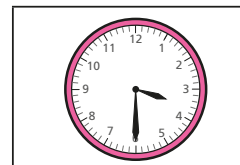


half past 1

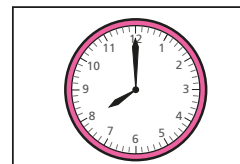


half past 4

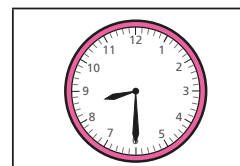
2 Match the clocks to the times.



8 o'clock

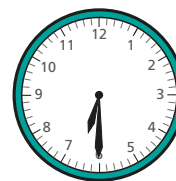


half past 8



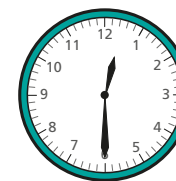
half past 3

3 Tick the time that matches the clock.



6 o'clock

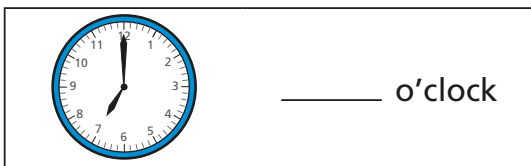
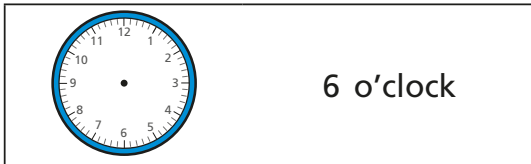
half past 6



6 o'clock

half past 12

4 Complete the pattern.



What time comes next?

