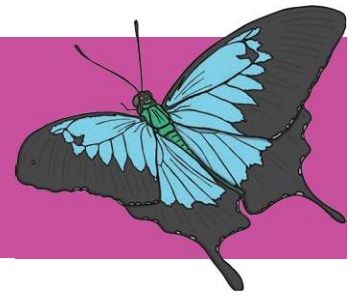


Balancing Butterfly

Science Experiment



Method

1. Print the butterfly onto card and cut it out.
2. Colour in the butterfly.
3. Stick the matchstick down along the length of the butterfly using the glue or sticky tape. Leave about 1cm of the matchstick sticking out past the head. If you are using glue, you will need to wait for it to dry before moving to the next step.
4. Slide a paperclip onto the tip of each front wing.
5. Adjust the paperclips slightly so the butterfly can balance on the tip of your finger.
6. Now the children are ready to explore.

You will need:

Butterfly Template

Card

Scissors

Matchstick

2 paperclips

Strong glue or sticky tape

Colouring pencils or felt-tip pens

