

# The Mystery Daytime Feather

The sun was just starting to rise and Otis Owl was excited for another daytime adventure with his best friend, Kia Kingfisher. Otis was normally awake at night-time, but Kia had been showing him how the world looked during the day.



“I’ve got a game for you!” said Kia. “I’ve found a feather that belongs to a bird you can only find awake during the day. I’m going to give you some clues and you have to work out which bird it belongs to. Let’s see how much you’ve learnt!”

Can you help Otis to work out who the mystery feather belongs to?

Bird	Size	Feather Colour	Main Food	Home
osprey	large	white	fish	tree
dove	medium	grey	seeds	tree
wood pigeon	medium	grey	seeds	woodland
grouse	medium	brown	insects	grassland
robin	small	red	seeds	hedgerow
mallard	medium	grey	seeds	near water
lesser spotted woodpecker	medium	white	insects	woodland
blue tit	small	yellow	seeds	hedgerow
bullfinch	small	red	seeds	woodland
pheasant	medium	brown	seeds	grassland
starling	medium	black	insects	woodland
buzzard	large	brown	small animals	tree
heron	large	white	fish	tree
magpie	medium	black	small animals	tree
greenfinch	small	yellow	insects	hedgerow
cormorant	medium	black	fish	near water

**Mystery solved! The feather belongs to a \_\_\_\_\_.**

# Sorting Sizes

## Clue 1

Kia has been keeping a record of the lengths of the feathers she finds. Help her to organise her findings and complete the table by adding the symbols for **greater than** (  $>$  ), **less than** (  $<$  ) or **equal to** (  $=$  ). Then, count how many of each symbol you have used and use the key to find out the answer to clue number 1!

$>$ , $<$ or $=$		
12cm		9cm
6cm		6cm
21cm		1cm
14cm		14cm
3cm		5cm
16cm		16cm
30cm		30cm



More $>$	the bird is large
More $<$	the bird is small
More $=$	the bird is medium

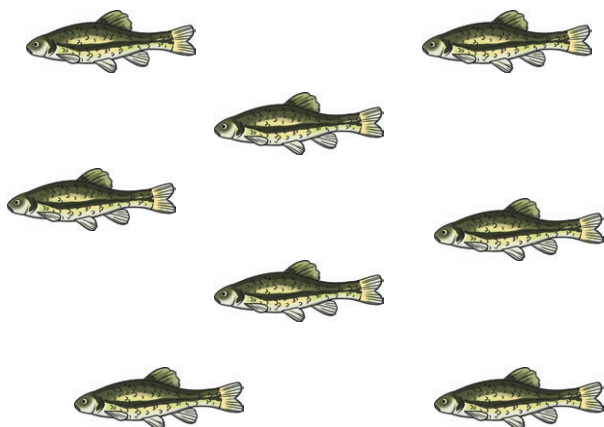
**Answer: The mystery bird is \_\_\_\_\_.**

# Food Fractions

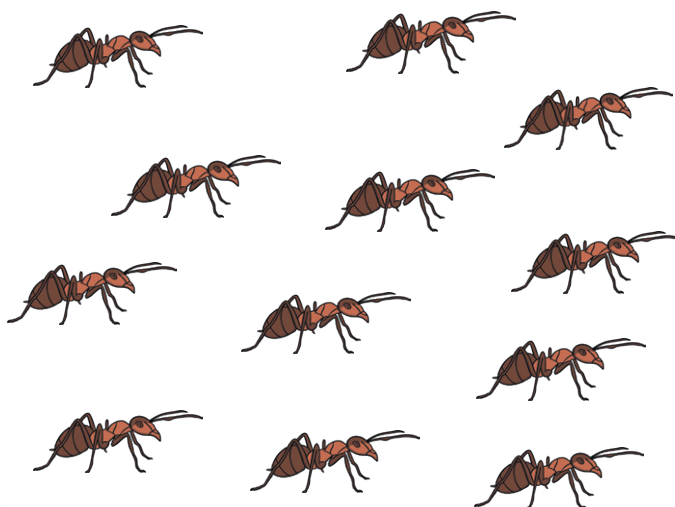
## Clue 2

Different daytime birds like to eat different types of food. Follow the instructions below and circle the given fraction of each food. Then, count how many of each food you have circled. The one you have circled the most of is the food Kia's mystery bird likes to eat!

Circle  $\frac{1}{2}$  of the fish.



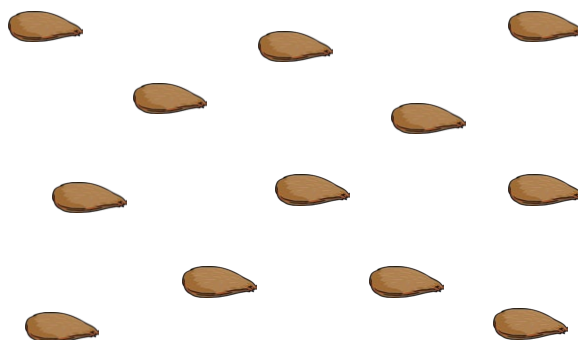
Circle  $\frac{1}{4}$  of the insects.



Circle  $\frac{2}{4}$  of the small animals.



Circle  $\frac{1}{2}$  of the seeds.



Answer: The mystery bird eats \_\_\_\_\_.

# A Colourful Code

## Clue 3

Kia tells Otis she will help him with the third clue. "If you can complete these calculations, I'll show you the feather and you can see what colour it is!"



Complete the calculations by filling in the missing numbers. Then, using the key below, colour in the numbers you have used. Arrange the coloured words to make a sentence which will tell you the colour of the feather!

$$16 + 24 = \square$$

$$10 + 20 = \square$$

$$21 + \square = 29$$

$$42 + \square = 52$$

$$35 + 15 = \square$$

$$\square + 55 = 60$$

<b>brown</b> 36	<b>yellow</b> 80	<b>feathers</b> 50	<b>mystery</b> 40
<b>has</b> 8	<b>the</b> 30	<b>had</b> 21	<b>white</b> 43
<b>bird</b> 10	<b>black</b> 2	<b>hair</b> 19	<b>grey</b> 5

**Answer:** \_\_\_\_\_.

# Stepping Stones

## Clue 4

Otis and Kia's friend, Selma Shrew, needs help crossing the river. Help her to find a safe crossing by colouring in the **multiples of 5**. The path will lead you to the type of home the bird lives in.



START	42	17	21	63
5	11	39	49	36
20	35	78	14	28
19	10	81	37	23
52	55	15	40	50
12	6	24	41	25
grassland	tree	hedgerow	near water	woodland

Answer: \_\_\_\_\_